

For Lease - Deer Valley Industrial Park

±193,366 SF in Two Buildings | 21410 & 21415 North 15th Lane, Phoenix, Arizona

±43,450 SF AVAILABLE
SUITE 100 - ±22,475 SF
SUITE 112 - ±14,933 SF
SUITE 110 - ±6,042 SF



John Pompay
First Vice President
602.224.4422
jpompay@brephoenix.com

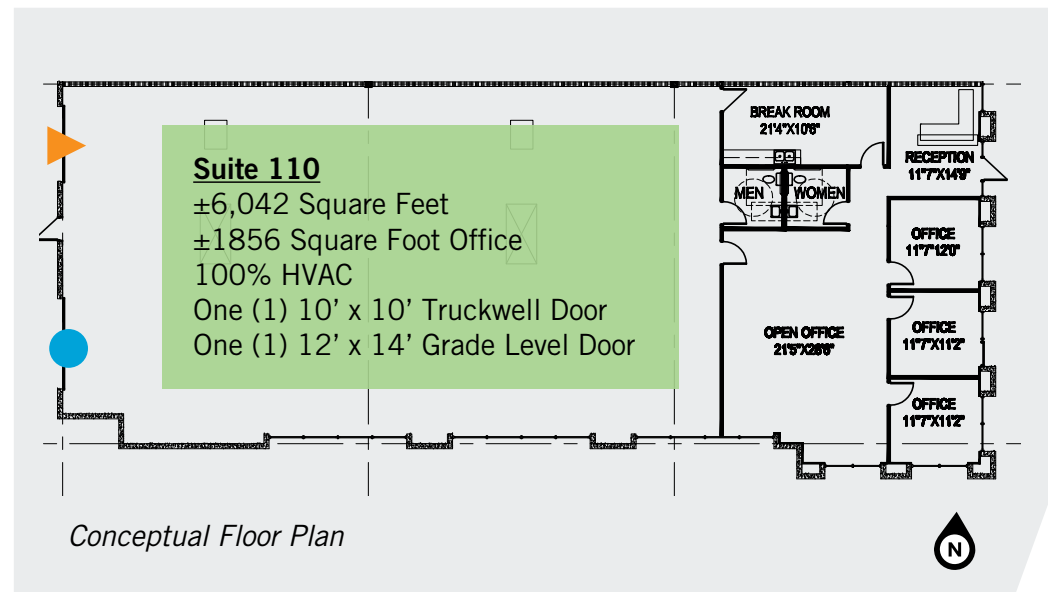
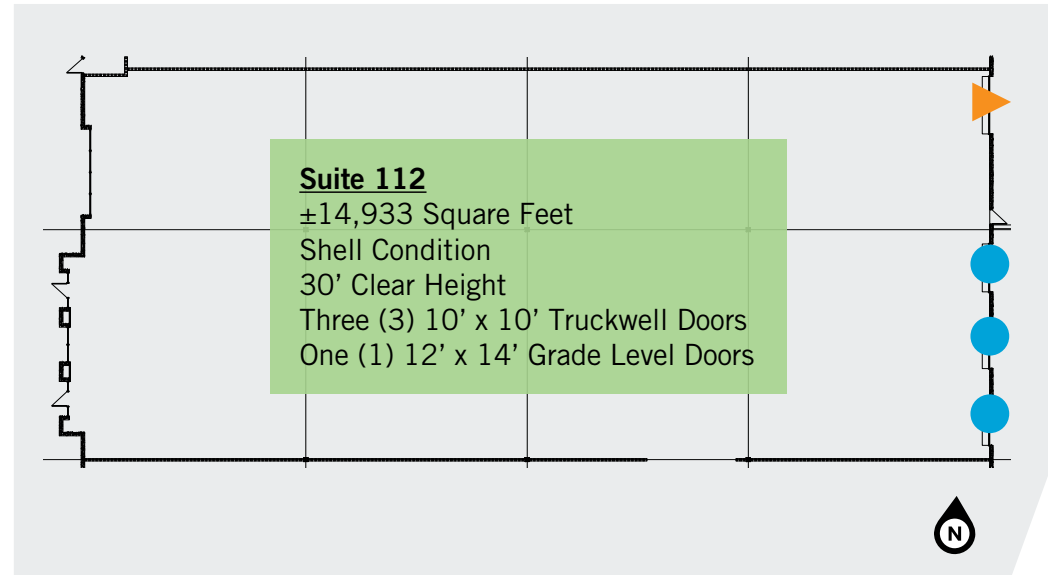
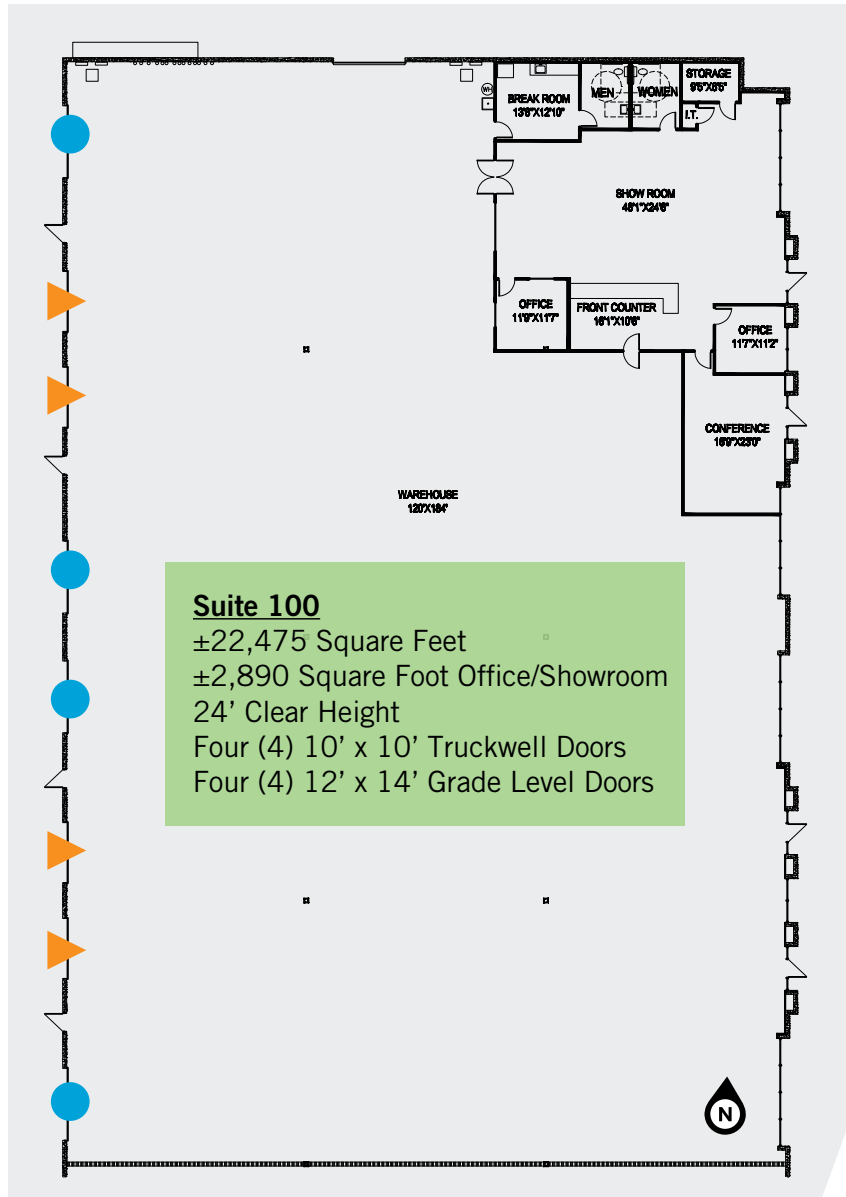
2375 E Camelback Rd Ste 300
Phoenix, Arizona 85016
p 602.954.9000
f 602.468.8588
www.brephoenix.com

Cassidy
Turley BRE
Commercial

CARLSON
REAL ESTATE
COMPANY

Deer Valley Industrial Park

21410 & 21415 North 15th Lane, Phoenix, Arizona



● = Grade Level Door ▲ = Truckwell Door

Not to scale



John Pompay
First Vice President
602.224.4422
jpompay@brephoenix.com

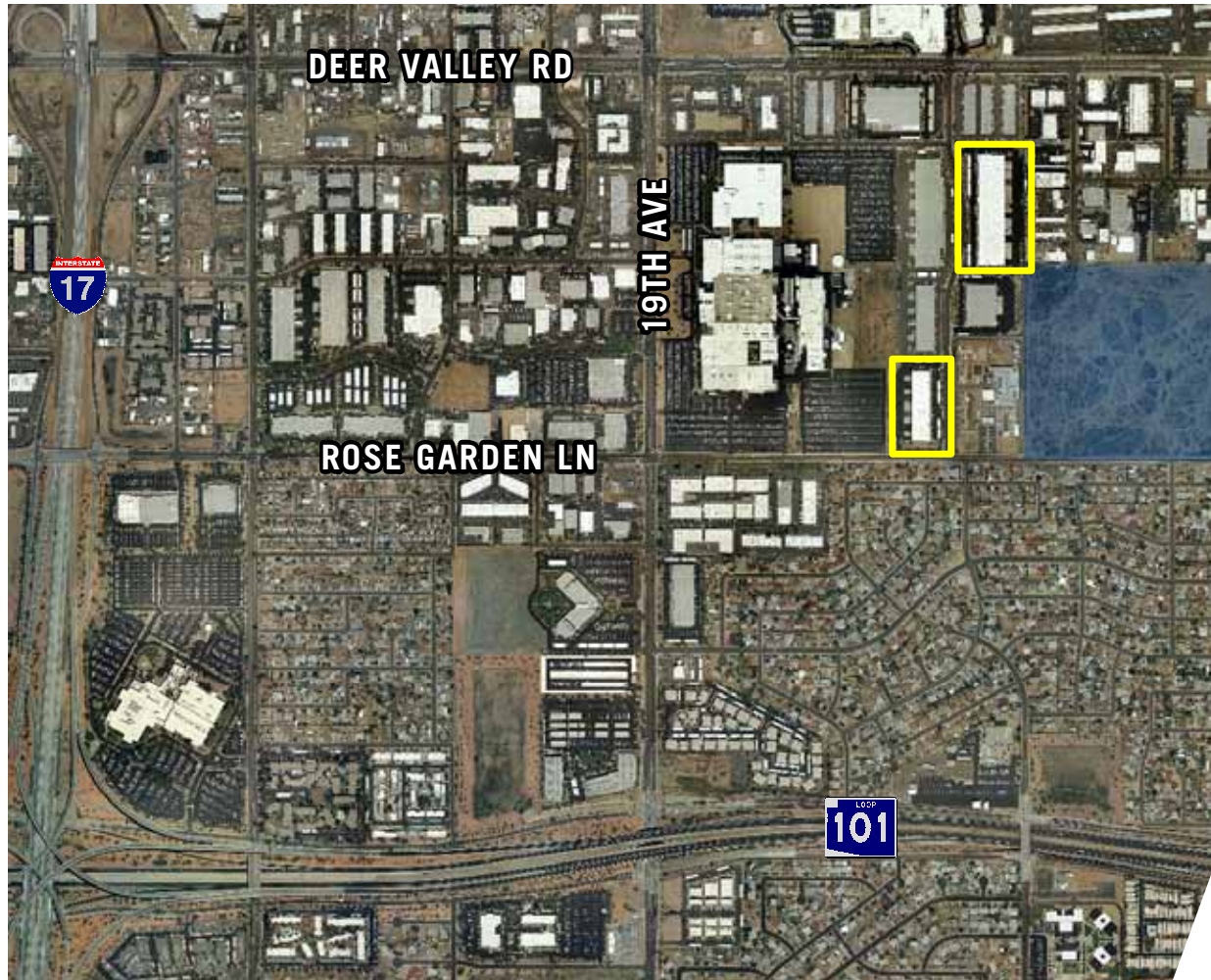
2375 E Camelback Rd Ste 300
Phoenix, Arizona 85016
p 602.954.9000
f 602.468.8588
www.brephoenix.com

Cassidy
Turley BRE
Commercial

CARLSON
REAL ESTATE
COMPANY

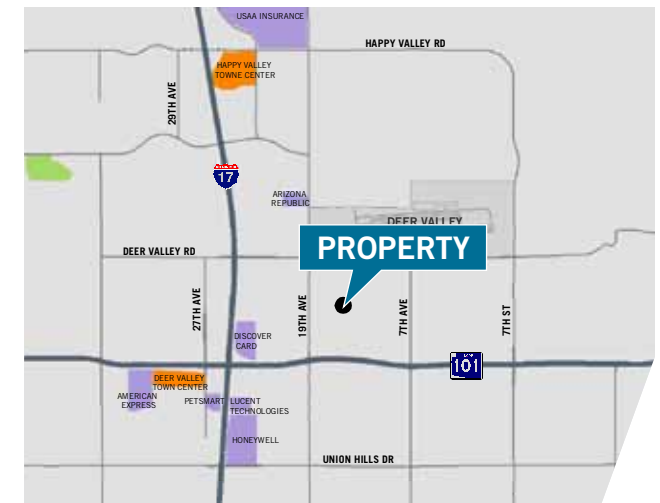
Deer Valley Industrial Park

21410 & 21415 North 15th Lane, Phoenix, Arizona



Property Features

- ±193,366 square feet in two buildings
- ±43,450 square feet available
- A-1 zoning; City of Phoenix
- ESFR sprinklered
- Tilt concrete construction
- Great access to Loop 101 & I-17



John Pompay
First Vice President
602.224.4422
jpompay@brephoenix.com

2375 E Camelback Rd Ste 300
Phoenix, Arizona 85016
p 602.954.9000
f 602.468.8588
www.brephoenix.com

Cassidy
Turley/BRE
Commercial

CARLSON
REAL ESTATE
COMPANY