



For more information, contact:

John Pompay
 First Vice President
 602.224.4422
 jpompay@brephoenix.com

Louis Finocchiaro, SIOR
 First Vice President
 602.224.4458
 lfinocchiaro@brephoenix.com

2375 E. Camelback Rd, Suite 300
 Phoenix, Arizona 85016

ph: 602.954.9000
 fx: 602.468.8588

www.brephoenix.com

100% AIR CONDITIONED SPACE FOR LEASE

Deer Valley Industrial Park

21410 North 15th Lane, Suite 116, Phoenix, Arizona

Property Features

- ±6,042 square feet available
- 30% office build out
- 24' clear height
- Endcap location
- One (1) 10' x 10' truckwell door
- One (1) 12' x 14' grade level door
- A-1 zoning; City of Phoenix
- ESFR sprinklered
- Asking Rate \$0.75 NNN
- Available 4/01/10
- Great access to Loop 101 & I-17

Managed by:

CARLSON
 REAL ESTATE
 COMPANY



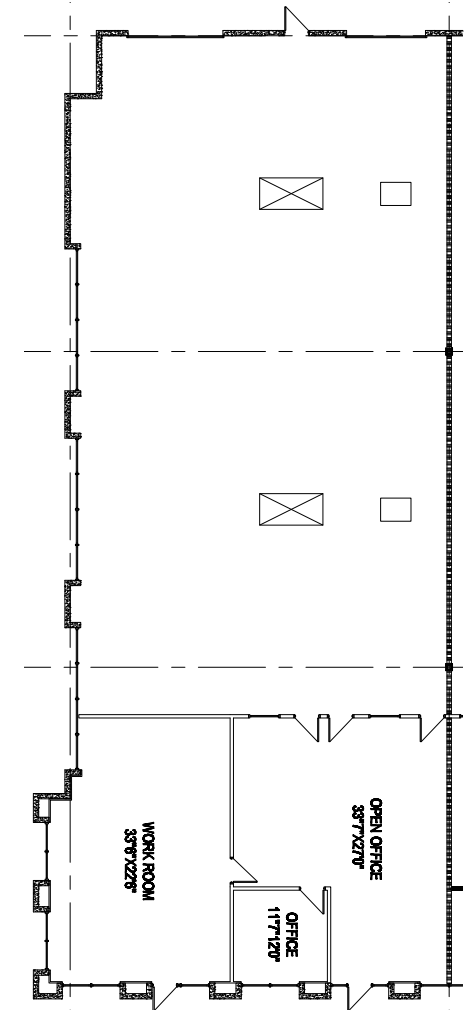
Cassidy
 Turley BRE
 Commercial

Deer Valley Industrial Park

21410 North 15th Lane, Suite 116, Phoenix, Arizona



Suite 116 Conceptual Floor Plan



For more information, please contact:

John Pompay
First Vice President
602.224.4422
jpompay@brephoenix.com

Louis Finocchiaro, SIOR
First Vice President
602.224.4458
lfinocchiaro@brephoenix.com

2375 E. Camelback Rd, Suite 300
Phoenix, Arizona 85016

ph: 602.954.9000
fx: 602.468.8588

www.brephoenix.com

Cassidy
Turley BRE
Commercial